

JF30

max 995 kg (CE)

2180 x 780 x 1750 mm

max 8 m

max 6.8 m



Technical Information



Load Chart

Dimension	L x W x H	2180 x 780 x 1750 mm
Stab. Area		3370 X 3370 mm

		Kg	
Crane & Options Weights		JF30	1440
		/	
		TF0500	12
		PP400-4DX PP220-4DX PP220-2DX	40
		JIB N JIB P	13 10

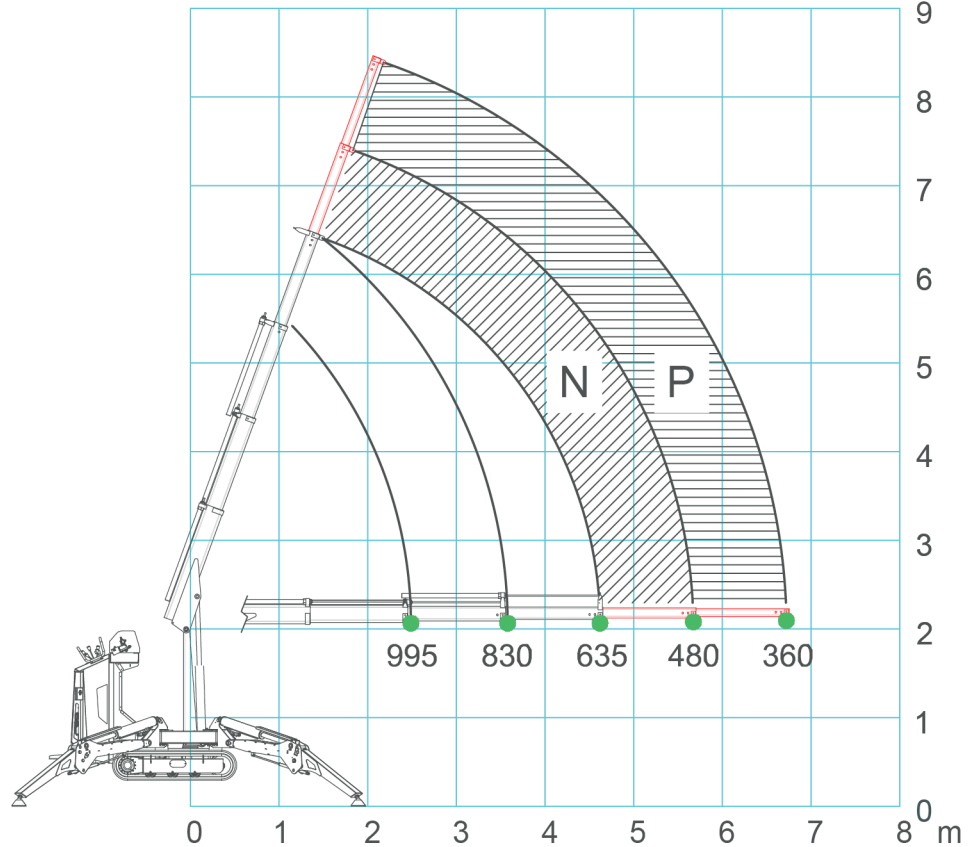
Winch		500 kg
		36 m - Ø 6 mm 27-35 m/min

JF30	Petrol Engine	YAMAHA MZ 360	7.6 kW 10.4 Hp
------	---------------	---------------	-------------------

Speed		2.6 km/h
-------	--	----------

Gradeability		25°
--------------	--	-----

N&P: manual extensions



Electric Power Pack

	400V 3-AC 4kW / 5.3 HP
	230V AC 2.2kW / 2.9 HP

Max. Track Load

	0.32 kg/cm ²
--	-------------------------

Max. Outrigger Load

	1050 kg
--	---------

Boom Length

1.5 - 4.7 m	30 sec.
-------------	---------

Working Angle

0° / 70°	14 sec.
----------	---------

Rotation

325° / 30 sec.



Dimensions

