

SPX1280

DIESEL BI-ENERGY



Lifting capacity
17,630 lb



Max tip height
87' 7"



Dimensions (l x w x h)
19' 2" x 4' 9" x 6' 9"



Powered by
Bi-Energy
Diesel + Electric Power Pack



Weight
15,650 lb
3,300 lb counterweight included



EN [ft - lb]



FEATURES



STABILITY & PERFORMANCE

- Optimal tip height/footprint ratio
- 87' 7" max tip height
- Only 15' 1" x 15' 1" max footprint
- Removable counterweight: minimizes ground pressure

DIESEL BI-ENERGY POWERED

Diesel engine

- 18,5 kW Kubota diesel engine
- Low consumption, high reliability

Electric Power Pack *

- On board motor: 100% electric operation
- Emission-free and noise-free indoor operation
- Three-phase motors for every Country



ENDLESS CRANE CONFIGURATIONS

Winch: 410' 1" rope

- 3,300 lb capacity single fall / 17,630 lb 6 falls
- Hook block stowing

Hydraulic jib - 3,300 lb SWL

- Hook or winch
- +10/-60° angle, up to 25' 3" length

Tools: Plug&Play connection



ACCURATE LOAD HANDLING

- Dynamic load sway control
- Automatic speed adjustment to ensure smooth and precise manoeuvres
- Automatic movement limitation to maximise safety
- Components engineered to maximise stiffness and load stability



SAFETY SYSTEMS

- Full LMI system
- Anti crash system
- Feedback on display



J-LINK POWERED BY TRACKUNIT*

- Remote fleet monitoring and diagnostics
- Built-in or retrofit on existing units



*Optional



4,400 LB PICK & CARRY

- Up to 4,400 lb lifting capacity
- 360° turret rotation
- Extendable crawler for improved driving

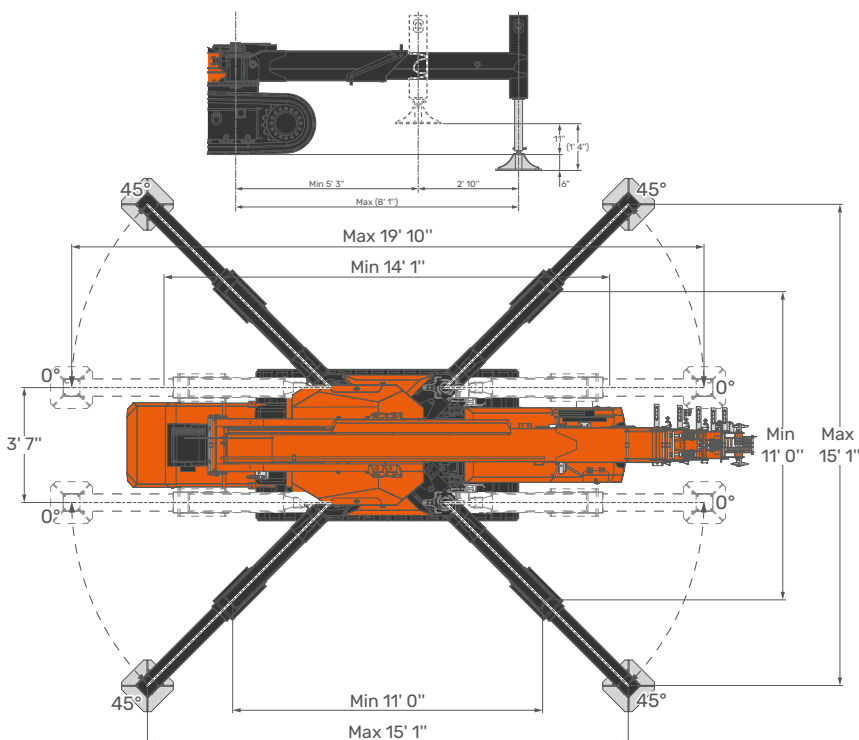
EASY TRANSPORT

- Precise and easy to drive



DIMENSIONS (ft)

STABILITY AREA (ft)



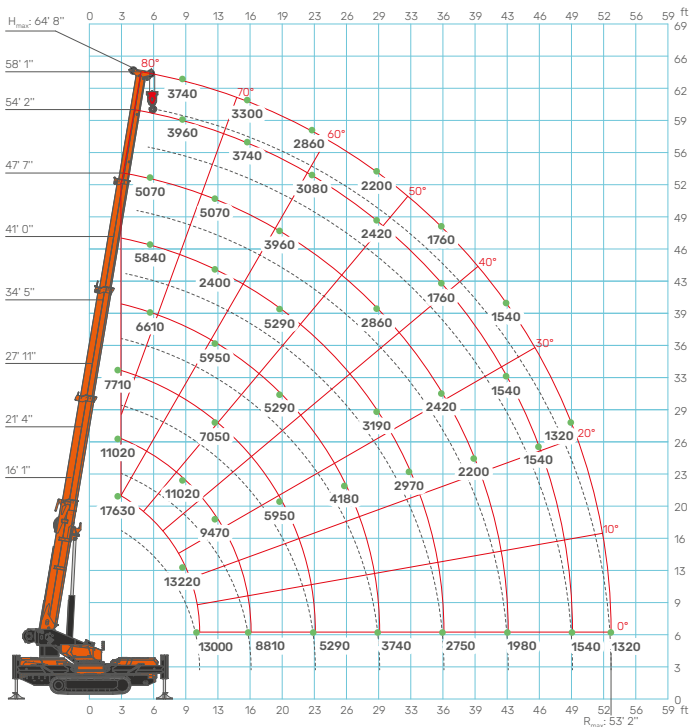
COMPACT FOOTPRINT

- Stepless outriggers rotation 0°/45°
- Stepless telescopic outriggers extension
- Self-levelling

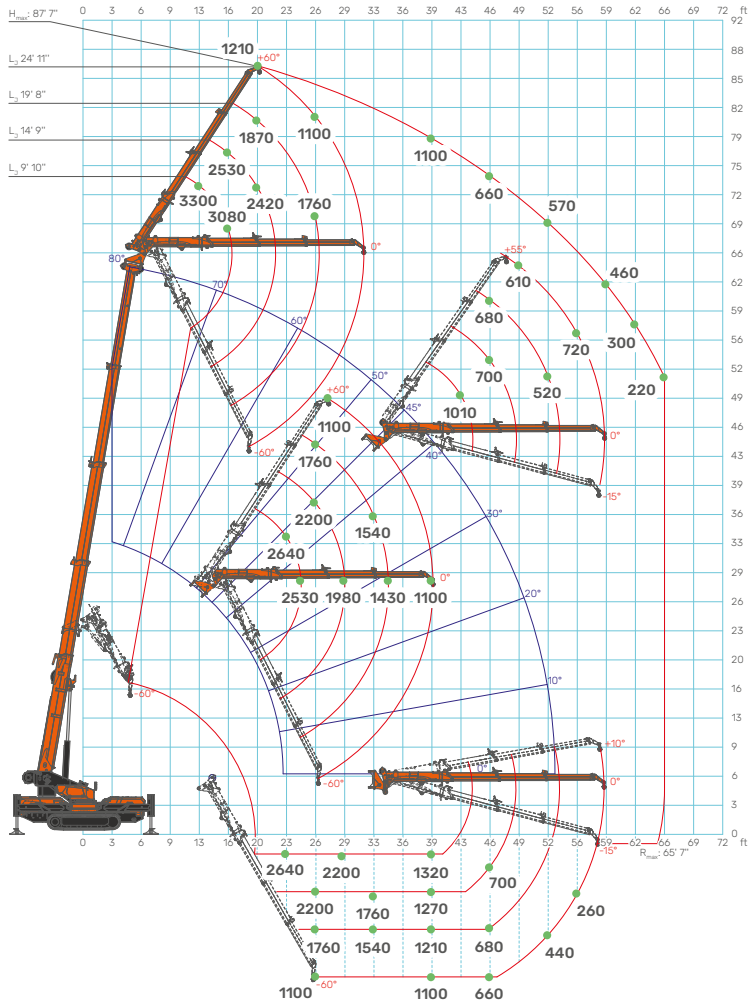


LOAD CHARTS

Main Boom



Hydraulic Jib



TOOLS AVAILABLE

HYDRAULIC JIB 3,300 lb SWL



TWO-SECTION LATTICE JIB 3,300 lb SWL



SEARCHER HOOK 7,710 lb SWL



BEAM/PIPE MANIPULATOR 1,100 lb SWL - JIB500GR



GLASS MANIPULATOR 1,760 lb SWL - JVM800R



SPX1280
DIESEL BI-ENERGY

Jekko USA • info@jekkouusa.com • www.jekkousa.com • (800) 670-4103
Specifications are subject to change without notice.
All data provided is for reference purposes only and is not legally binding.