



Technical Data
Specifications & Capacities

JF1050 CDH

Translation of the original instructions

[ft] [lb]

06.05.2026 | REV0.0

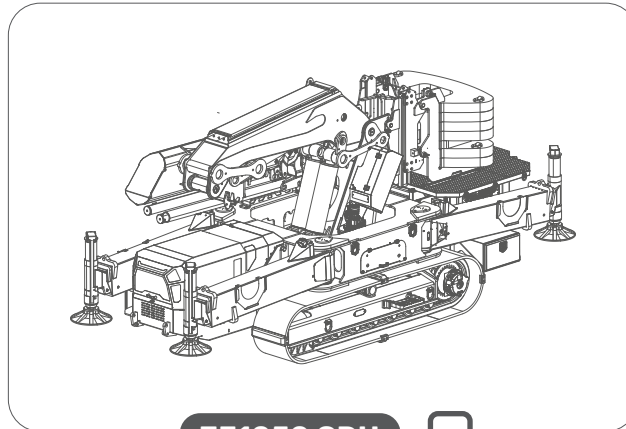


EN 12999:2020

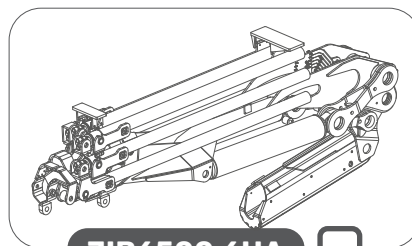
INDEX

Index	2
Crane configuration	3
Overall dimensions	4
Overall informations.....	5
Winch rope maximum reach.....	9
Stability areas	10
Outriggers.....	11
Tipping line - Load chart selection	12
Pressure charts.....	13
Main boom load chart.....	15
JIB6500.6HA load chart	18
One-man basket chart.....	22
Two-men basket chart.....	23
Two-men rotating basket chart.....	24
JIB6500.6HA features.....	25
One-man basket features	26
Two-men basket features	27
Two-men rotating basket features	28
Symbols	30

CRANE CONFIGURATION



JF1050 CDH



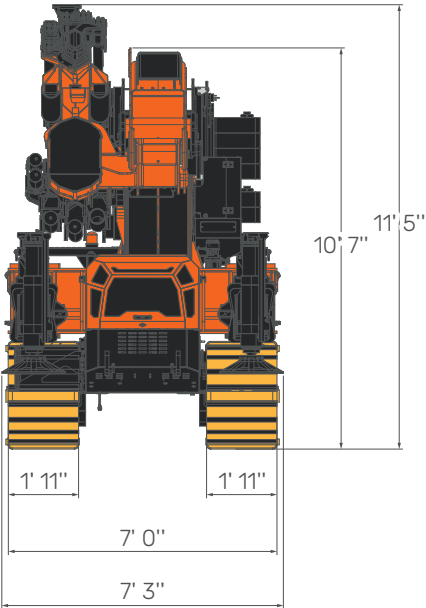
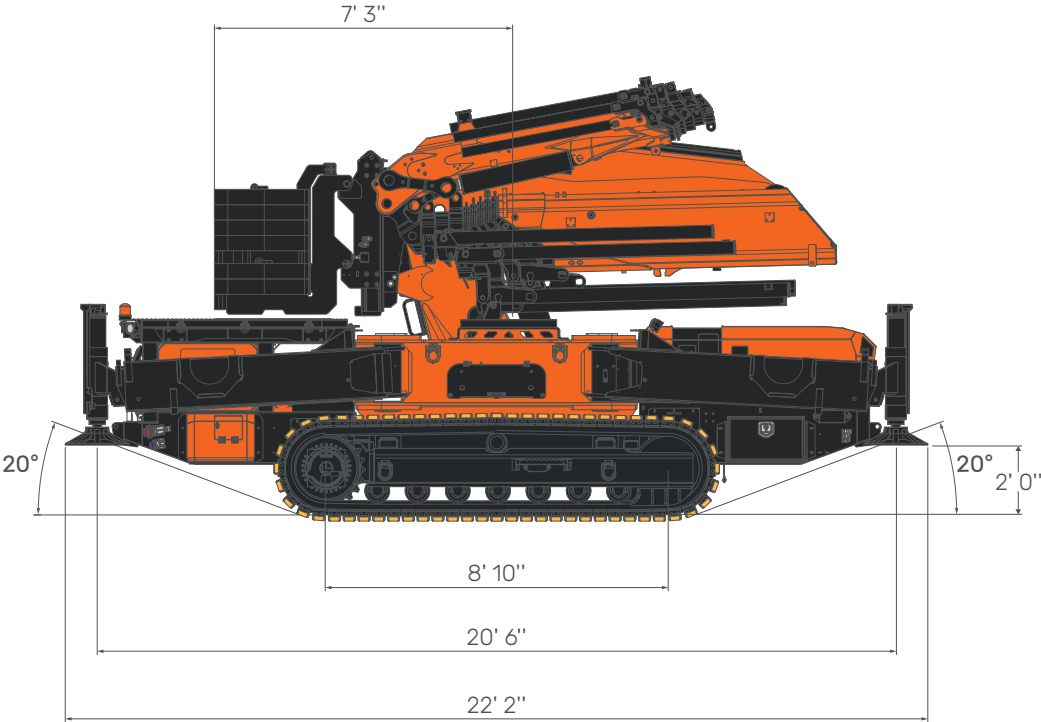
JIB6500.6HA

JF1050 CDH

Overall dimensions

06.05.2026 | REV0.0

OVERALL DIMENSIONS



OVERALL INFORMATIONS

CRANE INFO



	DESCRIPTION	U.M.	VALUE
OVERALL DIMENSIONS	Height	ft	10' 3"
	Length		22' 2"
	Width		7' 3"
BOOM	Length	ft	15' 1"/64' 10"
	Speed	s	- (15' 1"/64' 10")
SLEWING	Angle	°	360°
	Speed	rpm	-
LIFTING	Working Angle	°	0°/80°
	Speed	s	- (0°/80°)
MAX CAPACITY		lb	48,500
MAX OUTRIGGERS MAX LOAD		daN	30,675 ^[1]
TRACK LOAD		lb/in ²	-
TRAVEL SPEED	Slow	mph	-
	Fast		-
MAX GRADEABILITY (CLOSED TRACKS)		°	-° (-%)
WORKING TEMPERATURE		°F	+14°/+104°
SOUND EMISSIONS		dB	-
MAX WIND SPEED IN WORKING CONDITIONS		ft/s	452.7
Lifting Class (UNI 4301-1)		A1	

^[1]: Static lifting

JF1050 CDH

06.05.2026 | REV.0.0

Overall informations

WEIGHT



CRANE	Standard Configuration	lb	- ^{[1][2]}
COUNTERWEIGHT	CW-1	lb	6,610
	CW-2		4,410

HOOKBLOCKS



HOOKBLOCK	Single Fall	lb	160
	Double Fall		155
	Triple Fall		160
	Jib Single Fall		185

ACCESSORIES



JIB	JIB6500.6HA	With activation	lb	-
		Without activation		-
WINCH	W2000-JFM	lb	440	
	W3000-JFM-JFX		705	
MANUAL EXTENSIONS	ME1-JF1050.8	lb	250	
	ME2-JF1050.8		190	
	MEH-JF1050.8		377	
	ME1-JIB6500.6		80	
	ME2-JIB6500.6		55	
	ME3-JIB6500.6		35	
	MEH-JIB6500.6		48	
POWERPACK	3-Phase Kit	lb	176	
OUTRIGGERS MATS	OM500.1 (x4)	lb	203	
LOW MARKING PADS	WTP-JFX (x92)	lb	660	
PLE	MWP-1PG.JIB6500.6HA	lb	293	
	MWP-2PG.JIB6500.6HA		352	
	MWP-2PG-A.JIB6500.6HA		293	
	MWP-2PGR.JIB6500.6HA		456	
	MWP-2PGR-A.JIB6500.6HA		380	

^[1]: Dry weight

^[2]: Estimated fluids weight = 330 lb

ENGINE		ENGINE	Power Supply		Diesel	
			Power	kW	55,4	
		HP	75			
		Tank Capacity	gal	16		

POWER SUPPLY	- (CE)	3 PH + N + PE
	- (UL-CSA)	3 PH + PE

3-PHASE KIT	- (CE)	Tension	V	400
		Frequency	Hz	50
		Motor Power	kW	13,5
	- (UL-CSA)	Tension	V	480
		Frequency	Hz	60
		Motor Power	kW	13,5

BATTERY CHARGER	- (CE)	Charge	V	24
			Ah	27
	- (UL-CSA)	Charge	V	24
			Ah	27

HYDRAULIC SYSTEM		MAX WORKING PRESSURE		bar	325
		TANK CAPACITY		gal	72
		HYDRAULIC SYSTEM CAPACITY		gal	-
		OIL	ISO6743-4:HV	Mineral	ISO VG46
		ENGINE PUMP	Displacement	cc/rev	80
			Max Oil Flow	gal/min	42
		3-PHASE MOTORIZATION PUMP	Displacement	cc/rev	45
			Max Oil Flow	gal/min	16

JF1050 CDH

Winch

06.05.2026 | REV0.0

WINCH

W2000-JFM



LAYER	MAX PULL LINE daN	ROPE SPEED	
		STANDARD	ft/min
1	2,000 ^[1]		148
4	- ^[1]		189

ROPE

WIRE ROPE	BREAKING LOAD	∅	TOTAL LENGHT
	daN	in	ft
Anti twist 19x7 right lang lay	12,750	1/2"	196' 10"

W3000-JFM-JFX



LAYER	MAX PULL LINE daN	ROPE SPEED	
		STANDARD	ft/min
1	3,000 ^[1]		91
3	- ^[1]		118

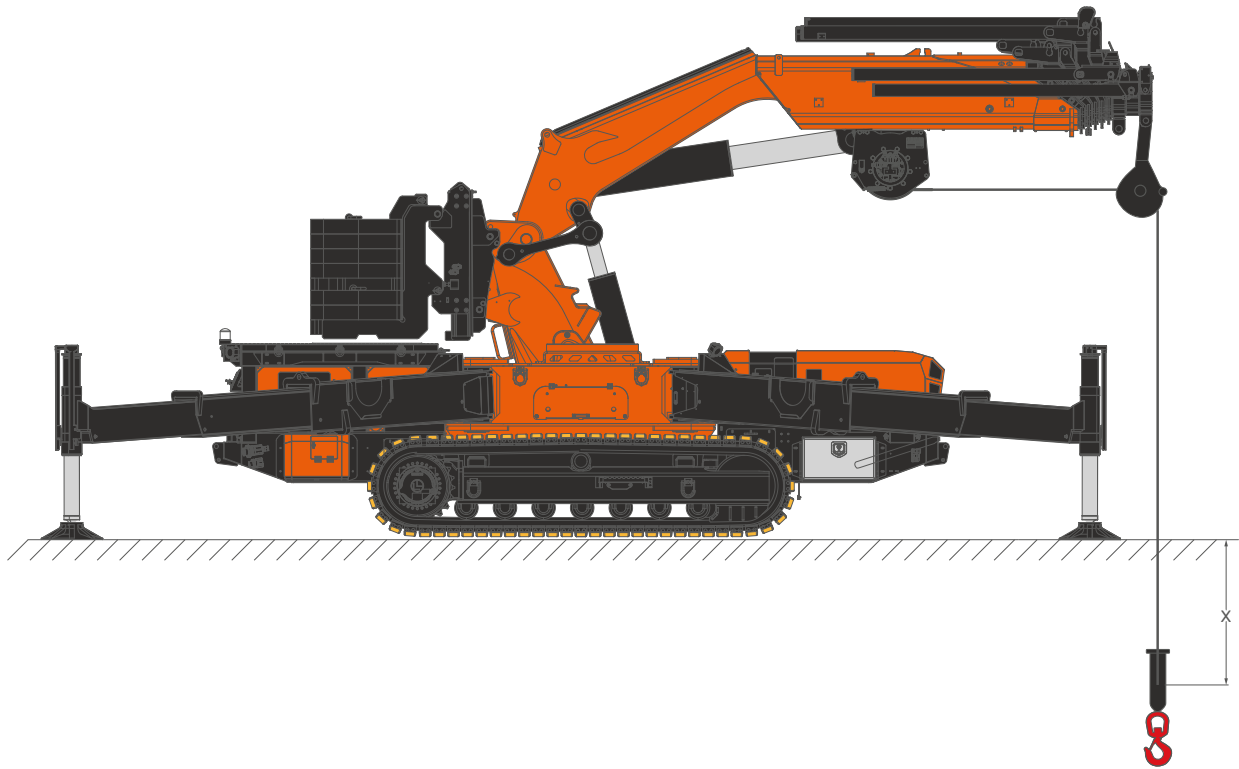
ROPE

WIRE ROPE	BREAKING LOAD	∅	TOTAL LENGHT
	daN	in	ft
Anti twist 19x7 right lang lay	18,600	1"	196' 10"

^[1]: LMI limited at 4,400 lb.

^[2]: LMI limited at 6,610 lb.

WINCH ROPE MAX REACH



ROPE



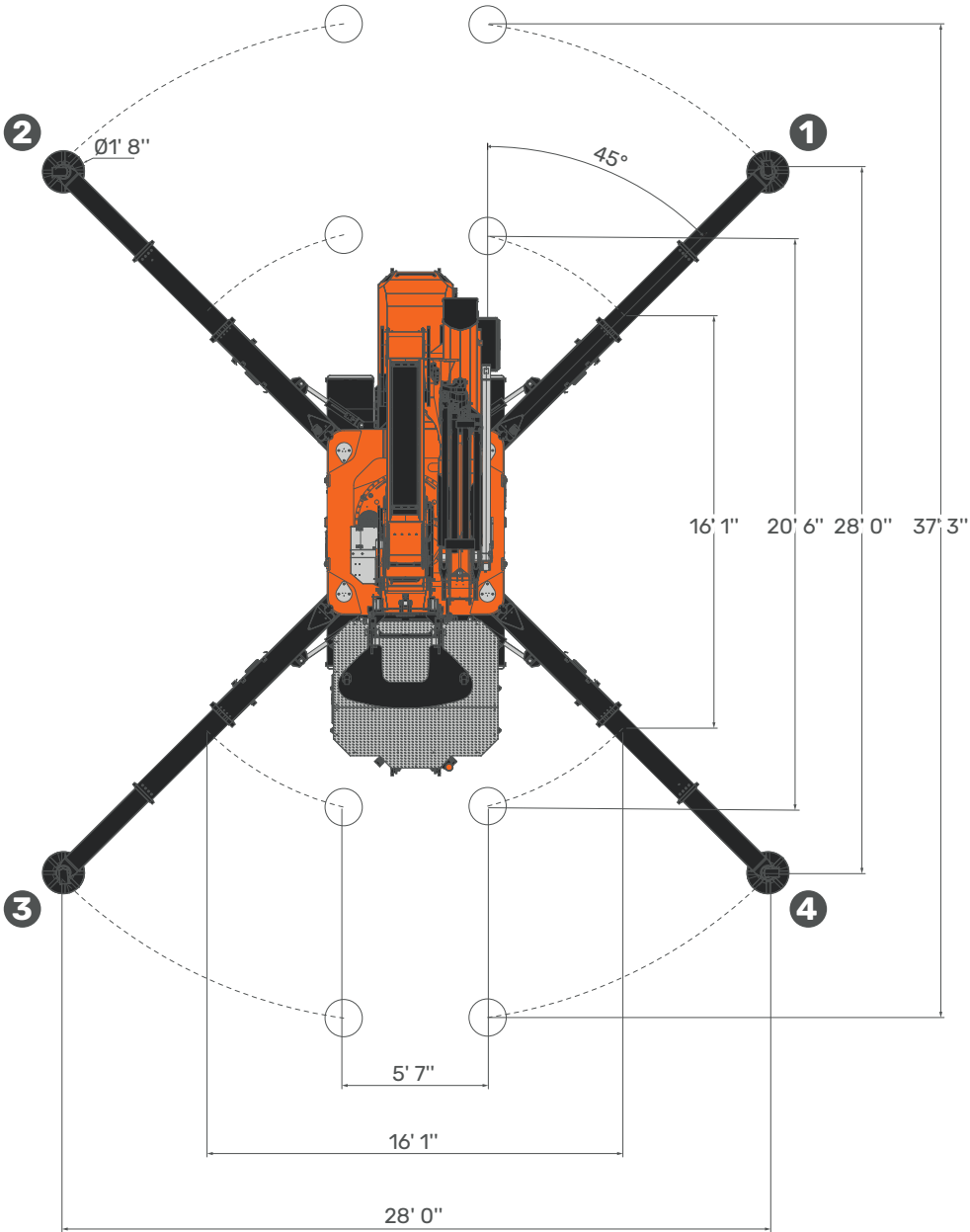
W2000-JFM	Parts of Line	1	ft	167' 4"
		3		49' 3"
W3000-JFM-JFX	Parts of Line	1	ft	164' 1"
		3		45' 11"

JF1050 CDH

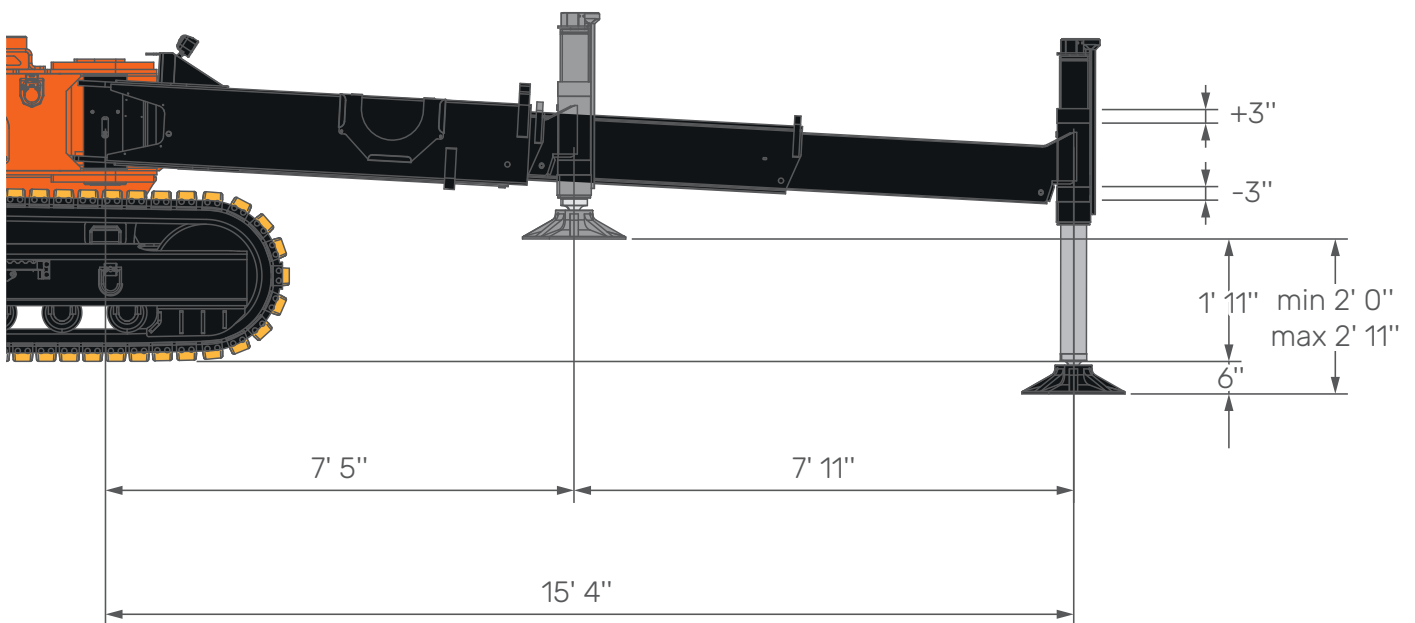
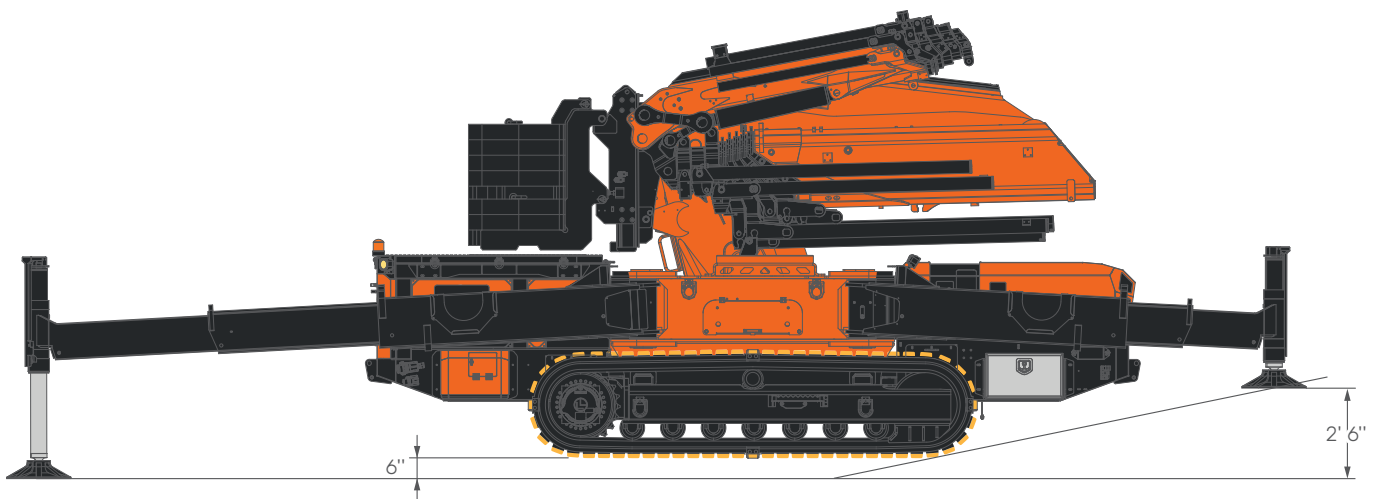
Stability areas

06.05.2026 | REV0.0

STABILITY AREAS



OUTRIGGERS



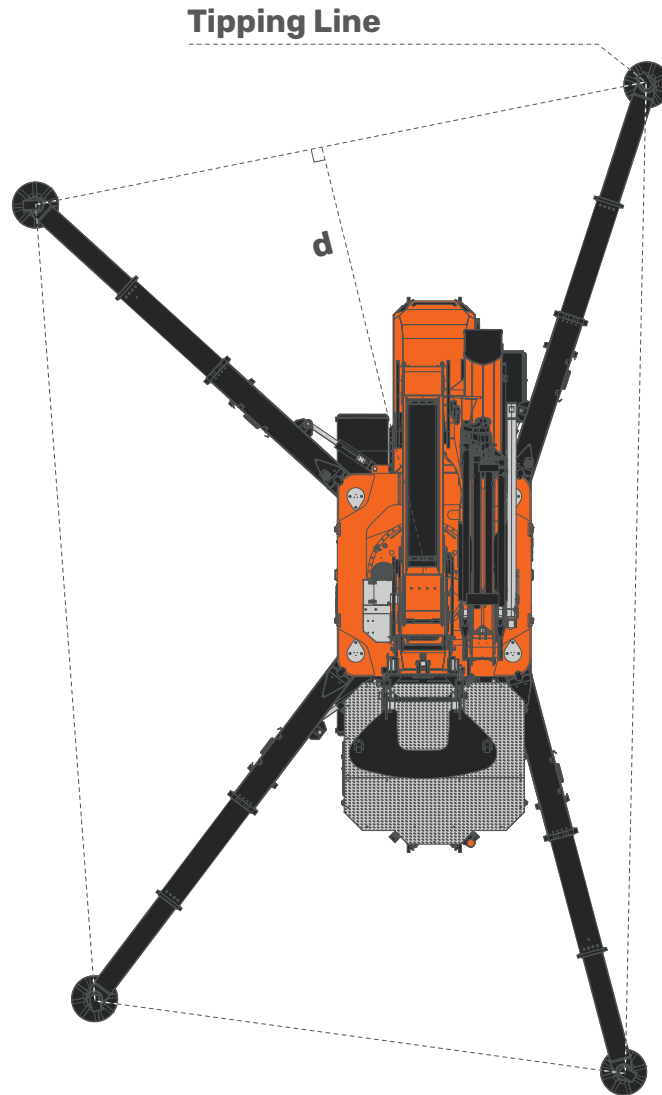
[ft]

JF1050 CDH

Tipping line - Load chart selection

06.05.2026 | REV0.0

TIPPING LINE

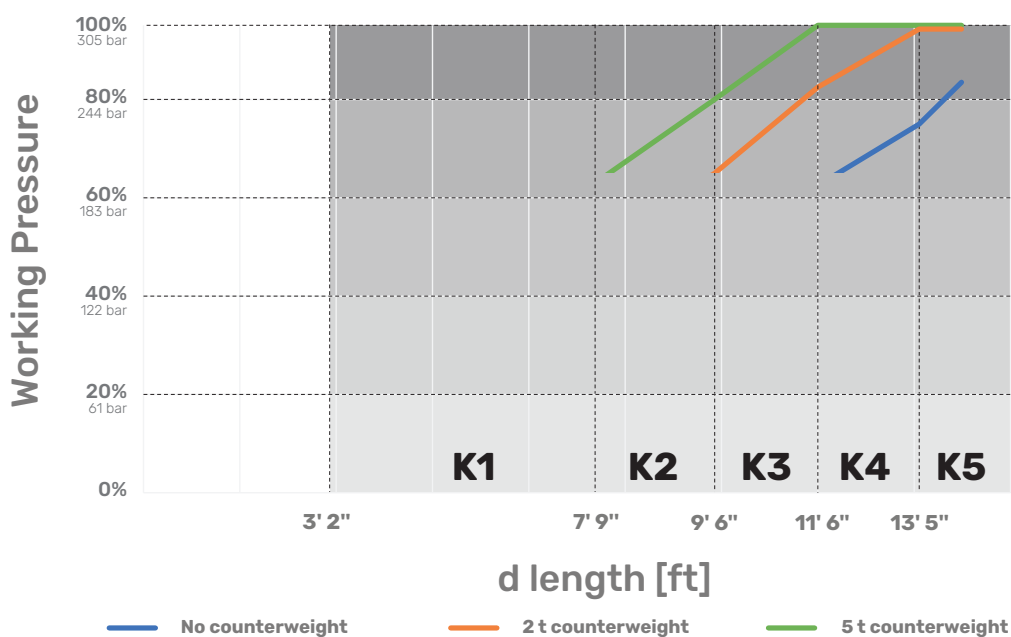
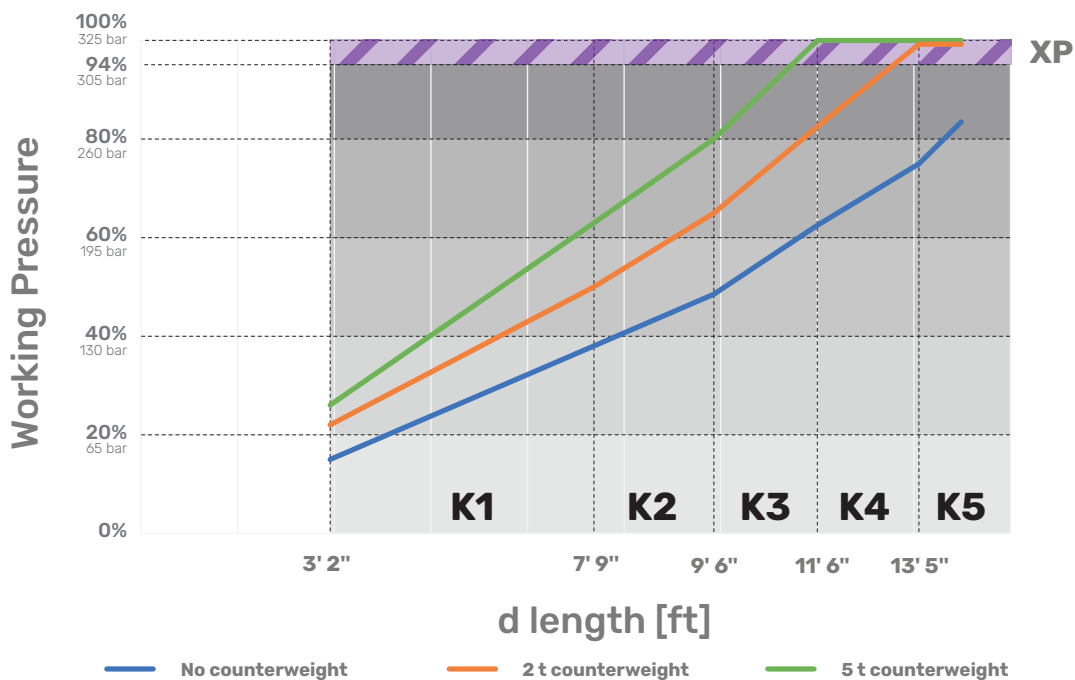


LOAD CHART SELECTION

K	d min	d max
K1	3' 2"	7' 9"
K2	7' 9"	9' 6"
K3	9' 6"	11' 6"
K4	11' 6"	13' 5"
K5	13' 5"	-

PRESSURE CHARTS

MAIN BOOM

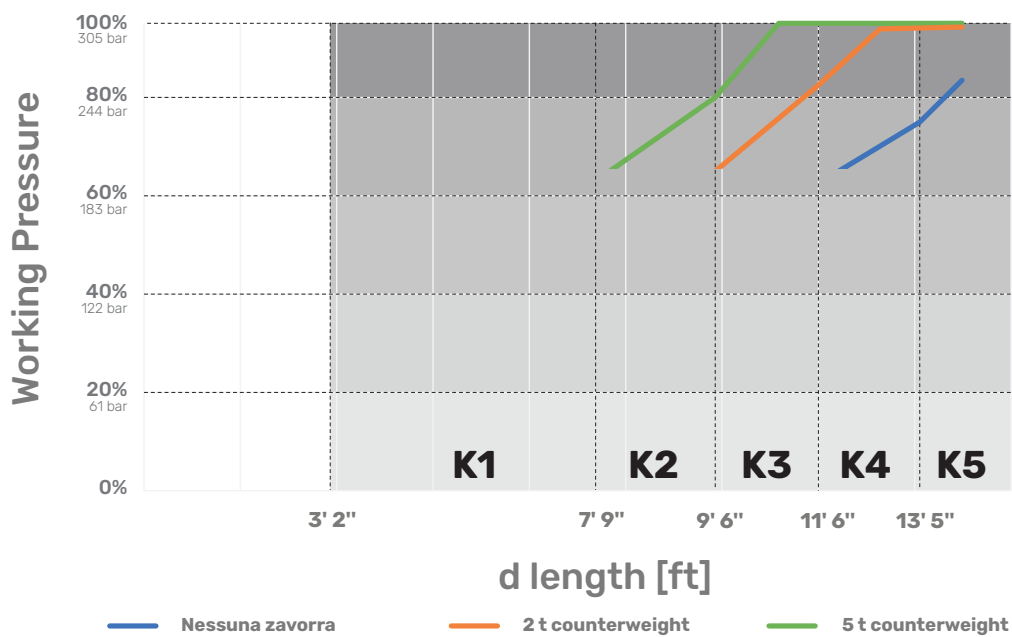
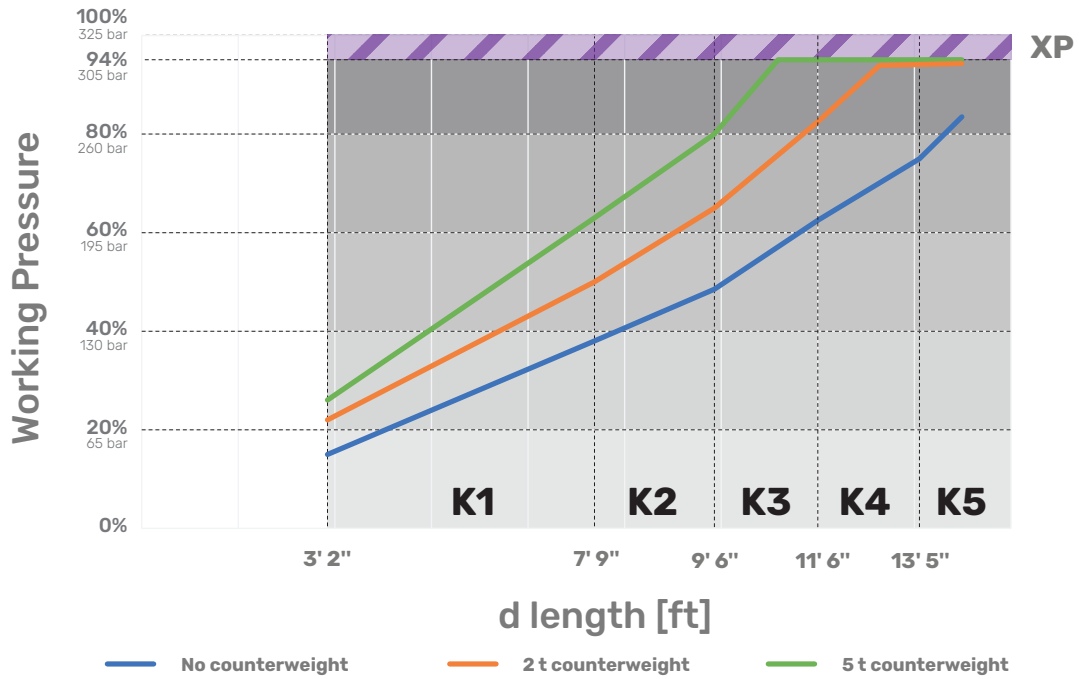


JF1050 CDH

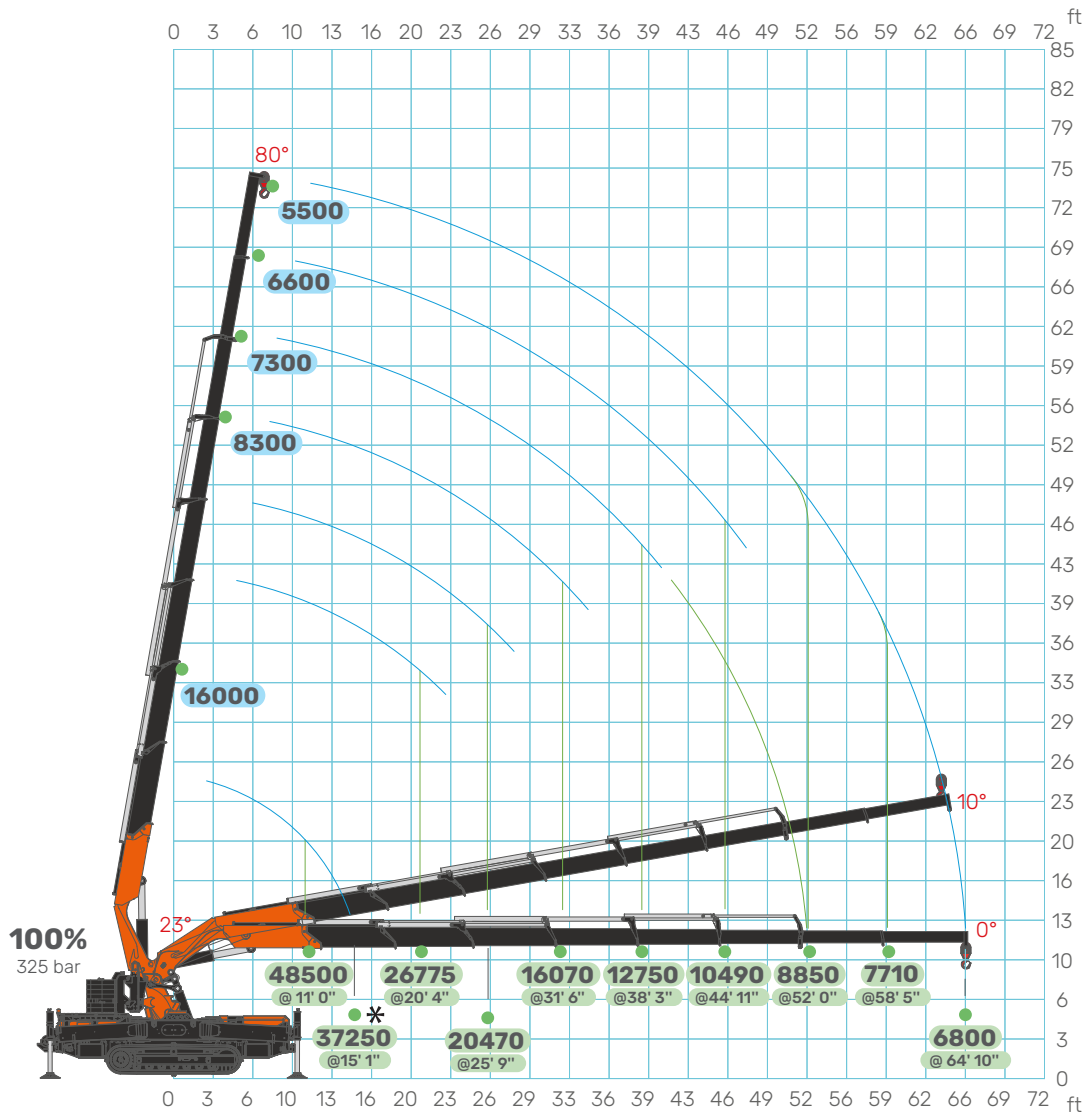
Pressure charts

06.05.2026 | REV.0.0

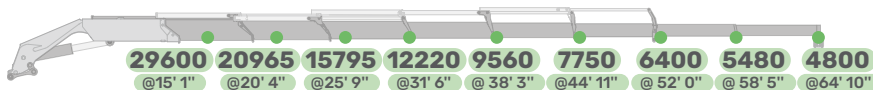
JIB6500.6HA



MAIN BOOM



80%
260 bar



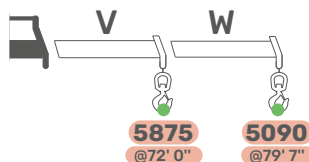
60%
195 bar



40%
130 bar



20%
65 bar

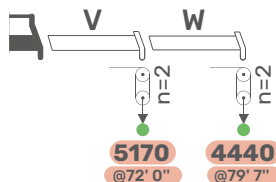
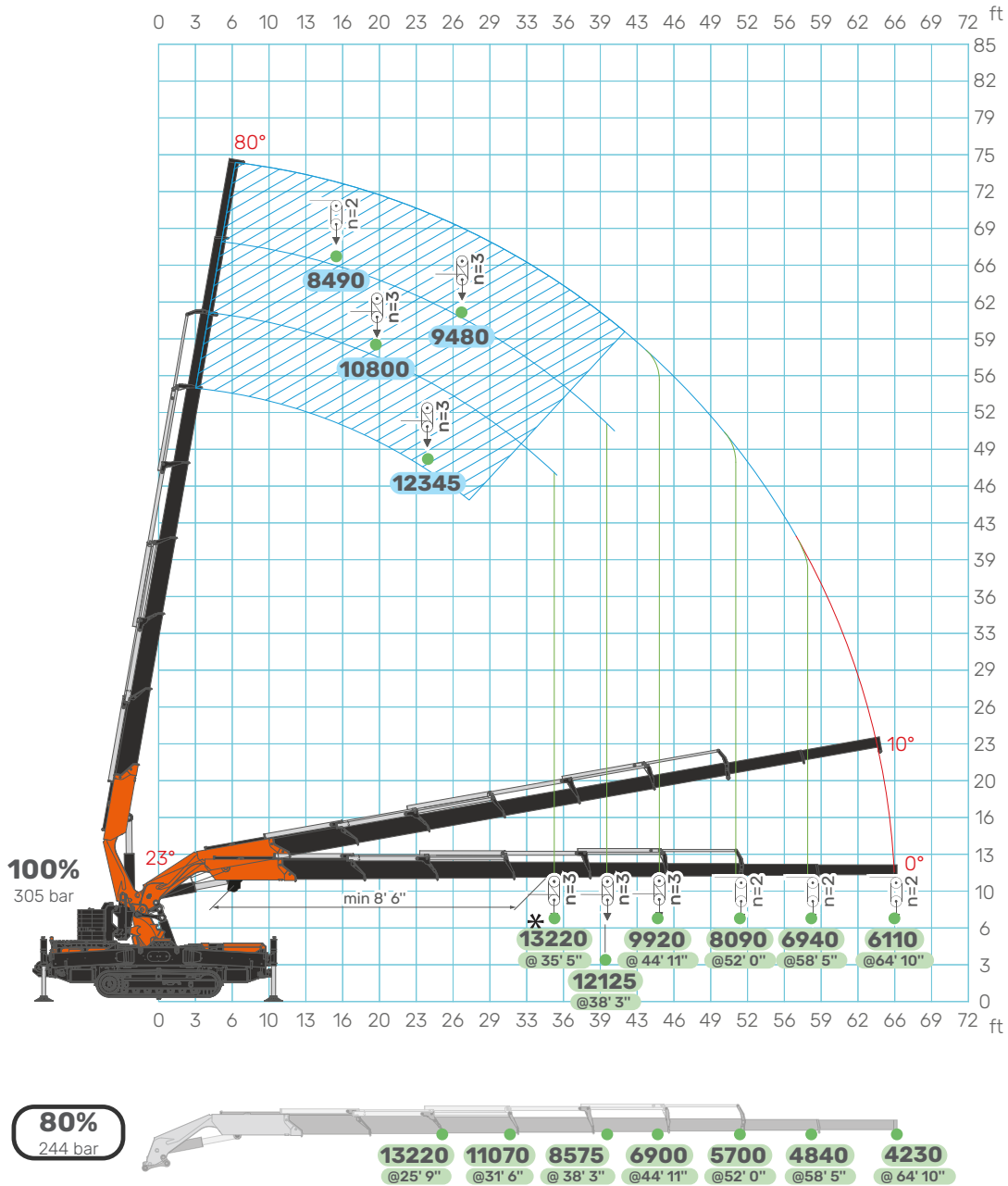


[ft] [lb]

JF1050 CDH

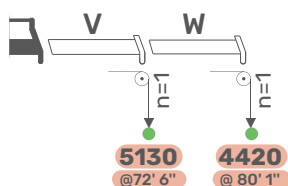
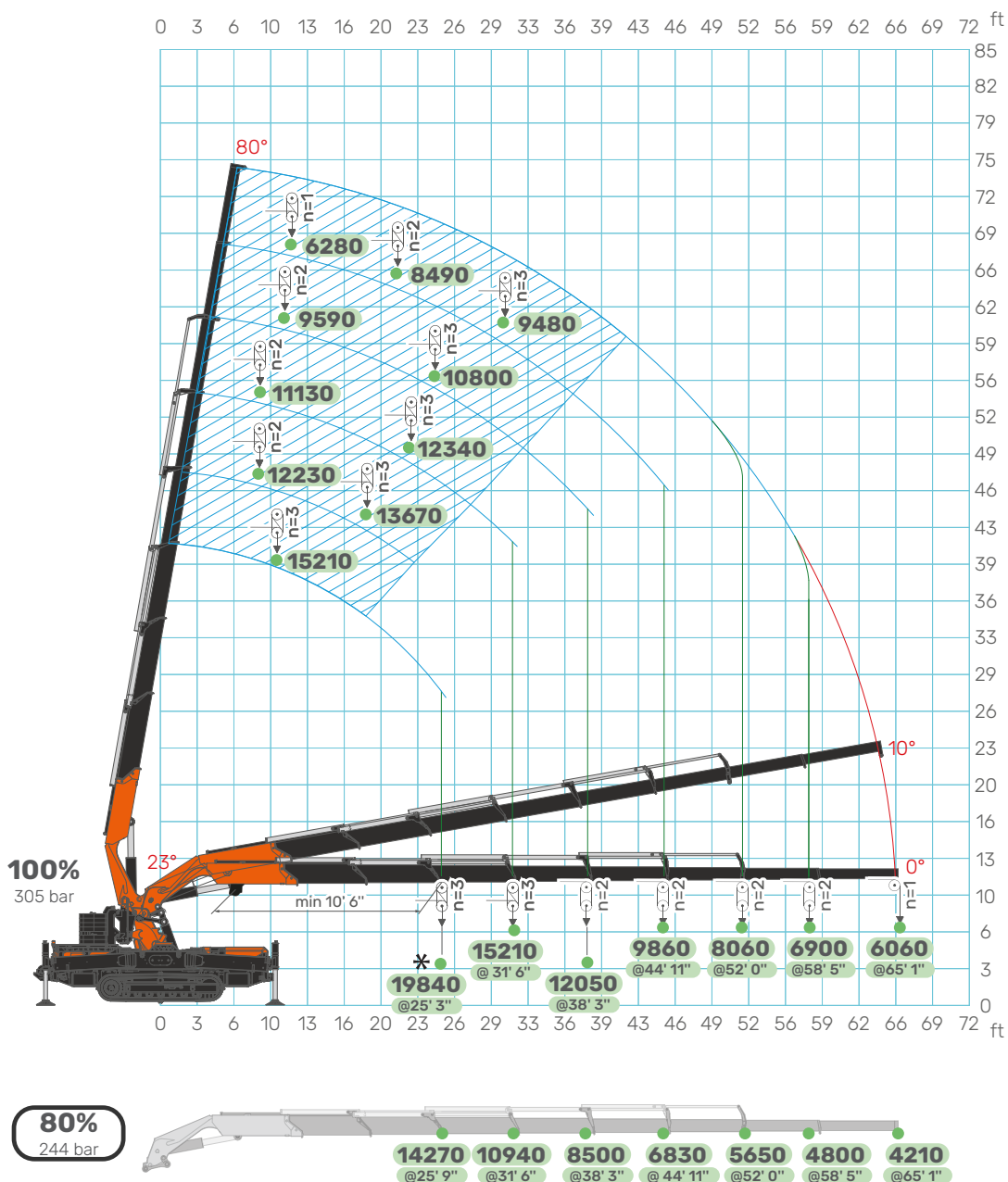
Main boom load chart

06.05.2026 | REV.0.0



[ft] [lb]

Main boom load chart



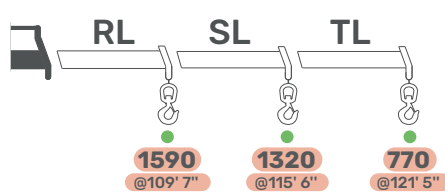
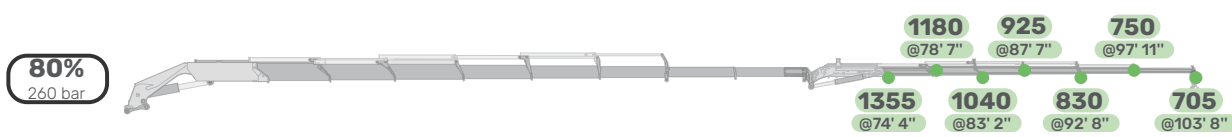
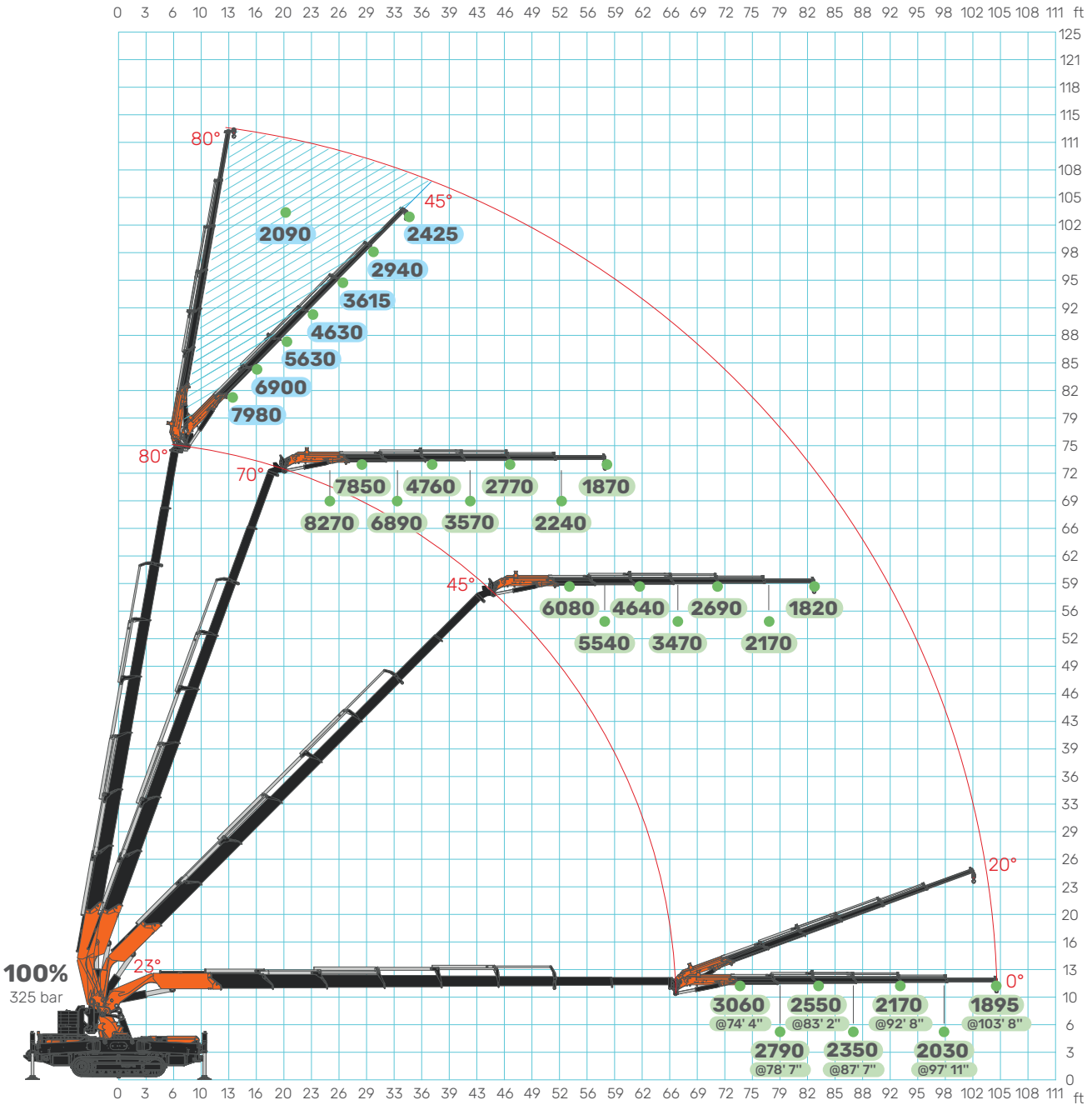
[ft] [lb]

JF1050 CDH

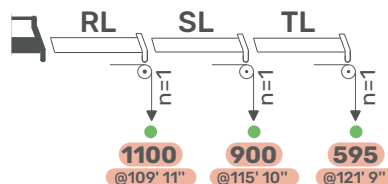
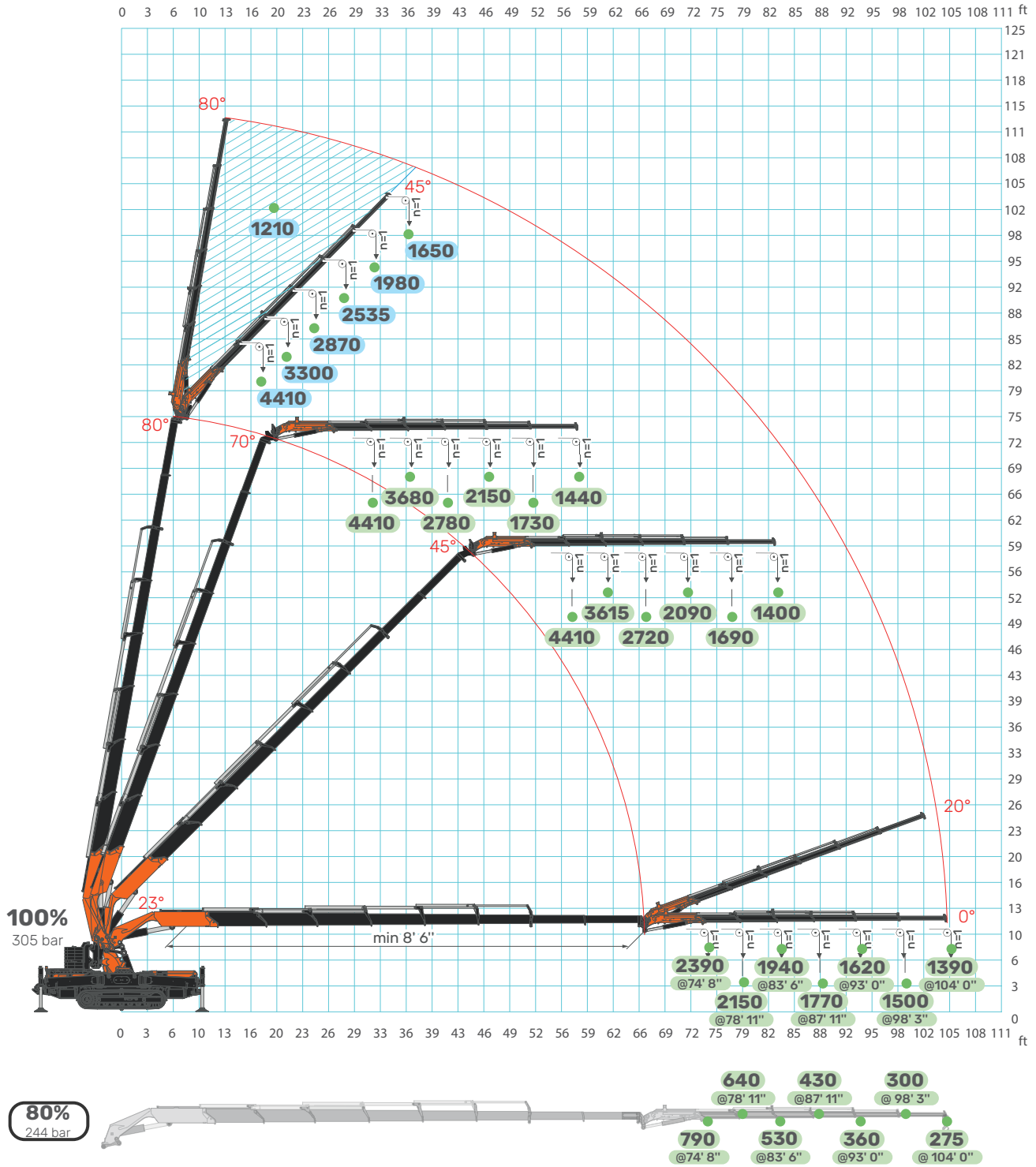
JIB6500.6HA load chart

06.05.2026 | REV.0.0

JIB6500.6HA



[ft] [lb]

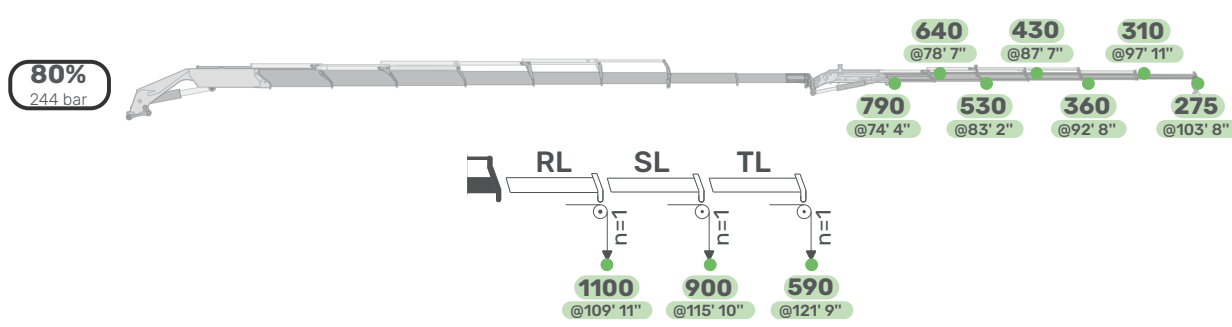
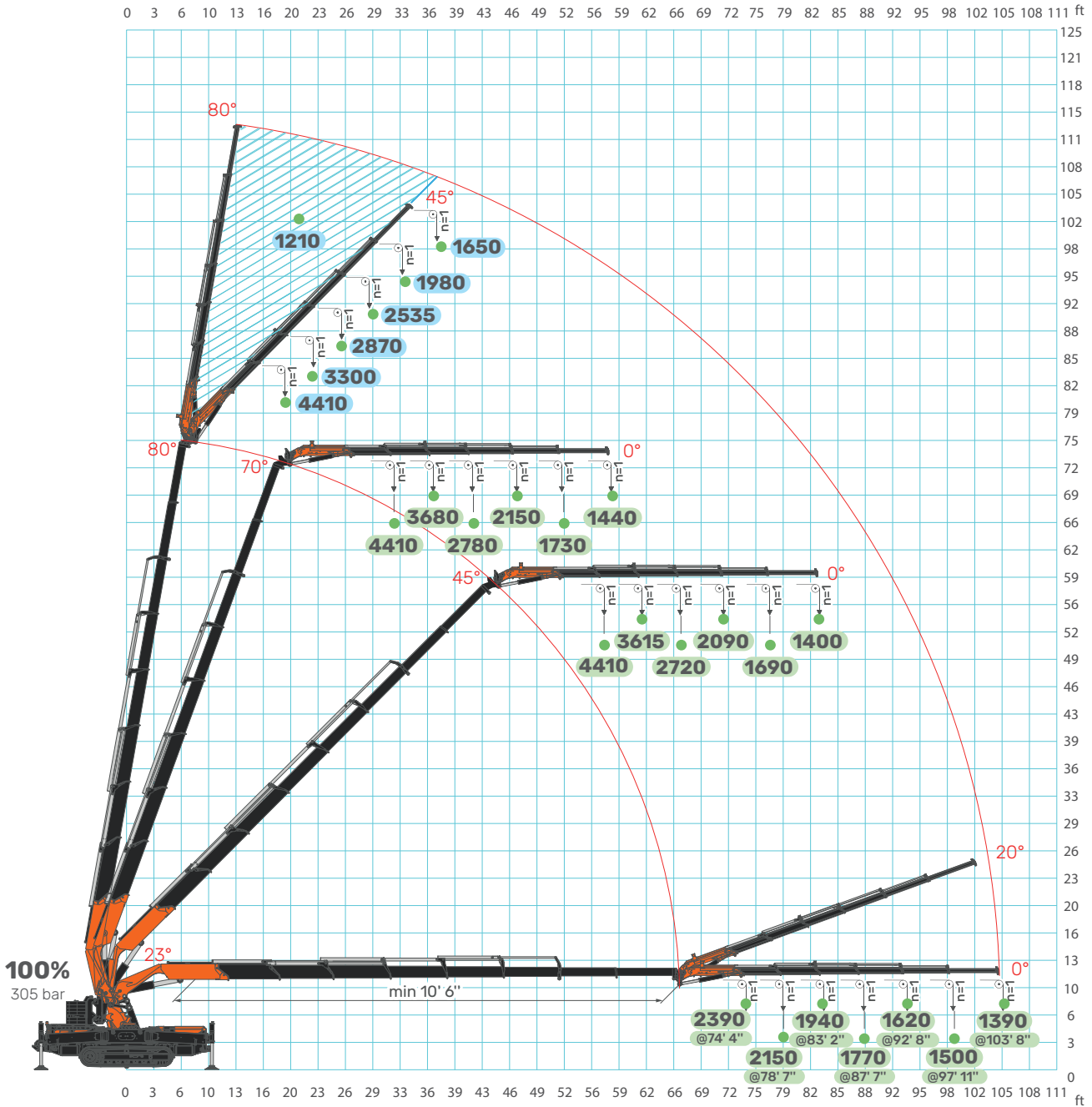


[ft] [lb]

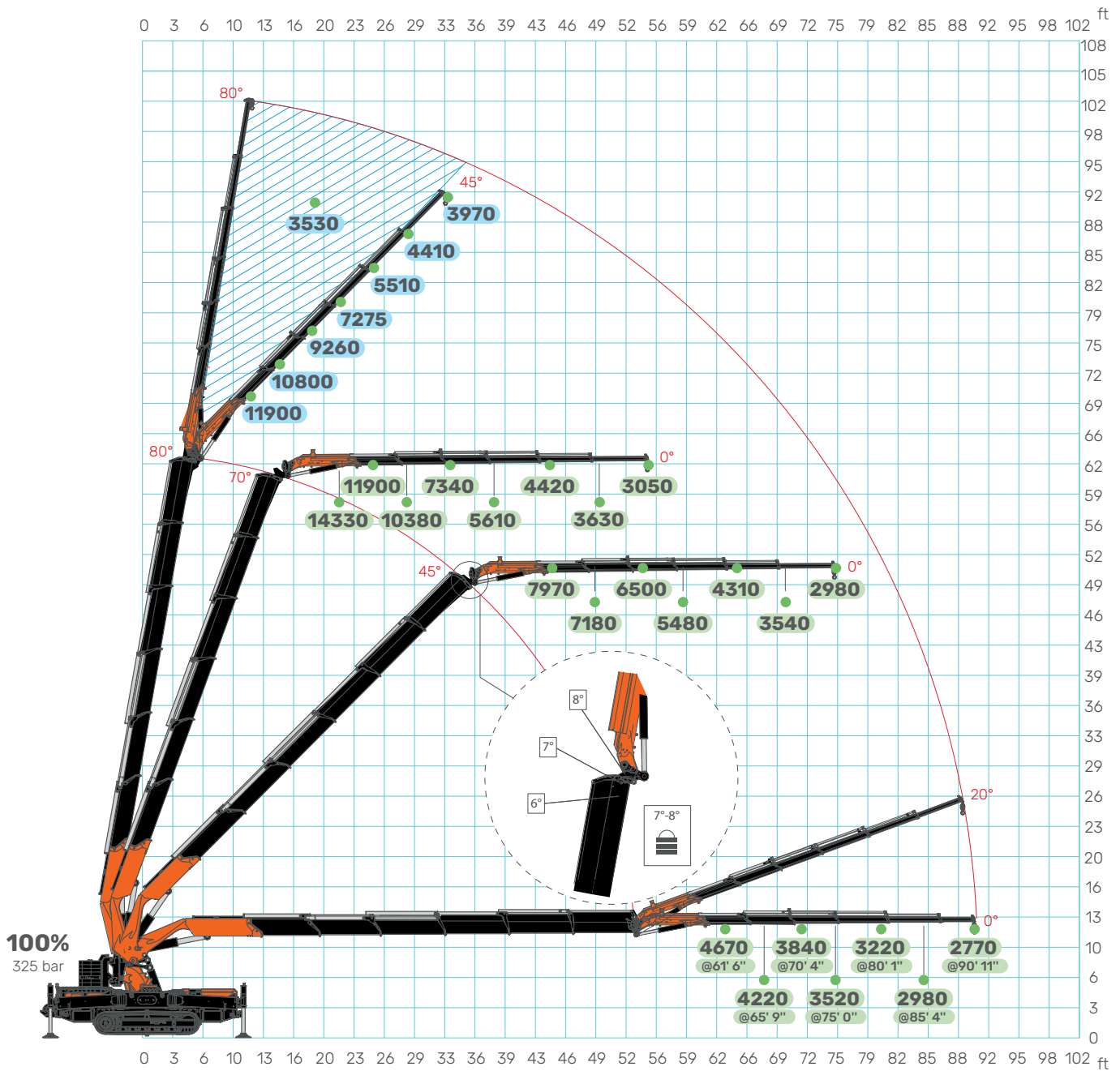
JF1050 CDH

JIB6500.6HA load chart

06.05.2026 | REV.0.0



[ft] [lb]

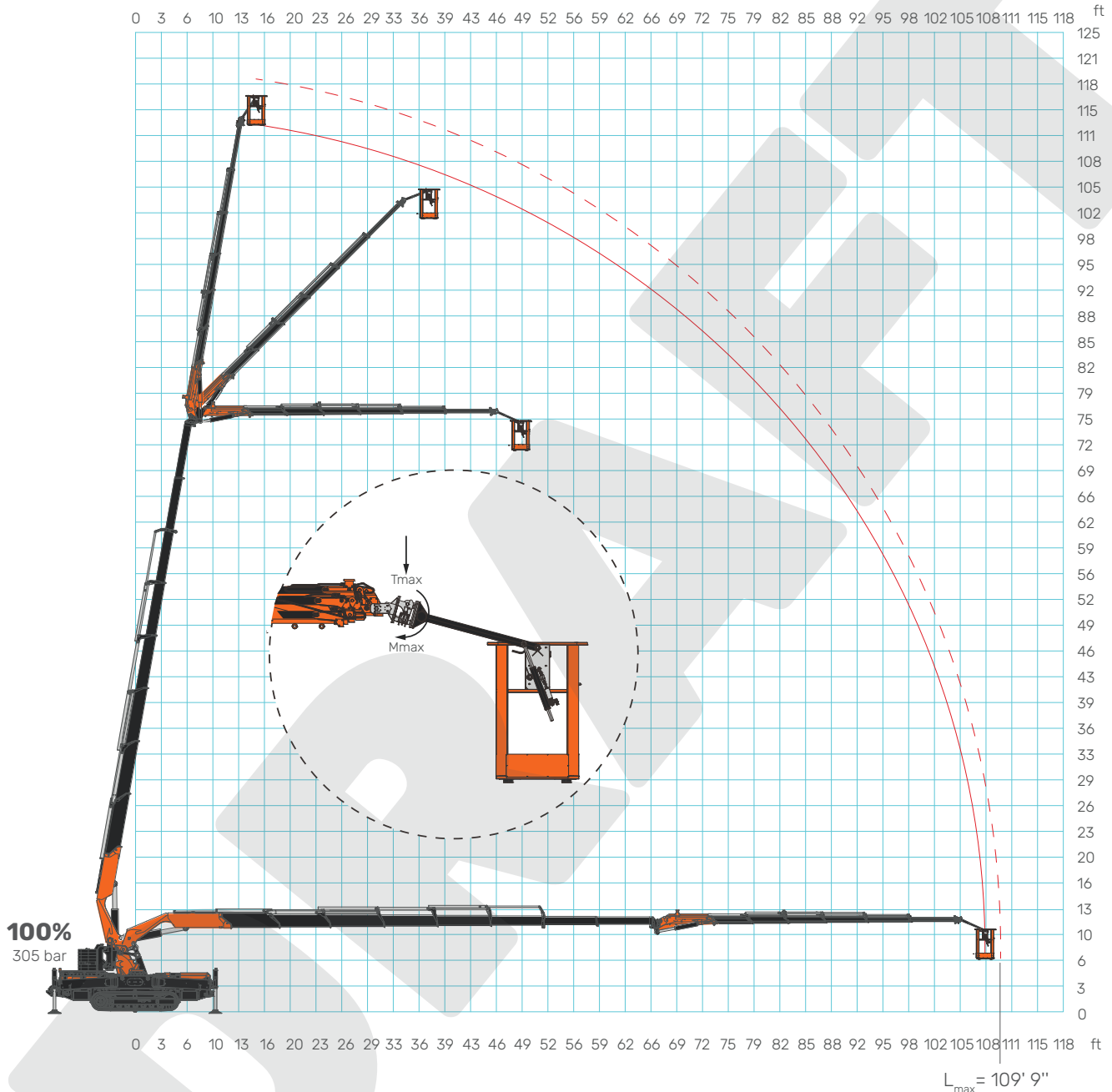


JF1050 CDH

One-man basket chart

06.05.2026 | REV0.0

PLE



PLE



MWP-1PG.JIB6500.6HA

Max Capacity

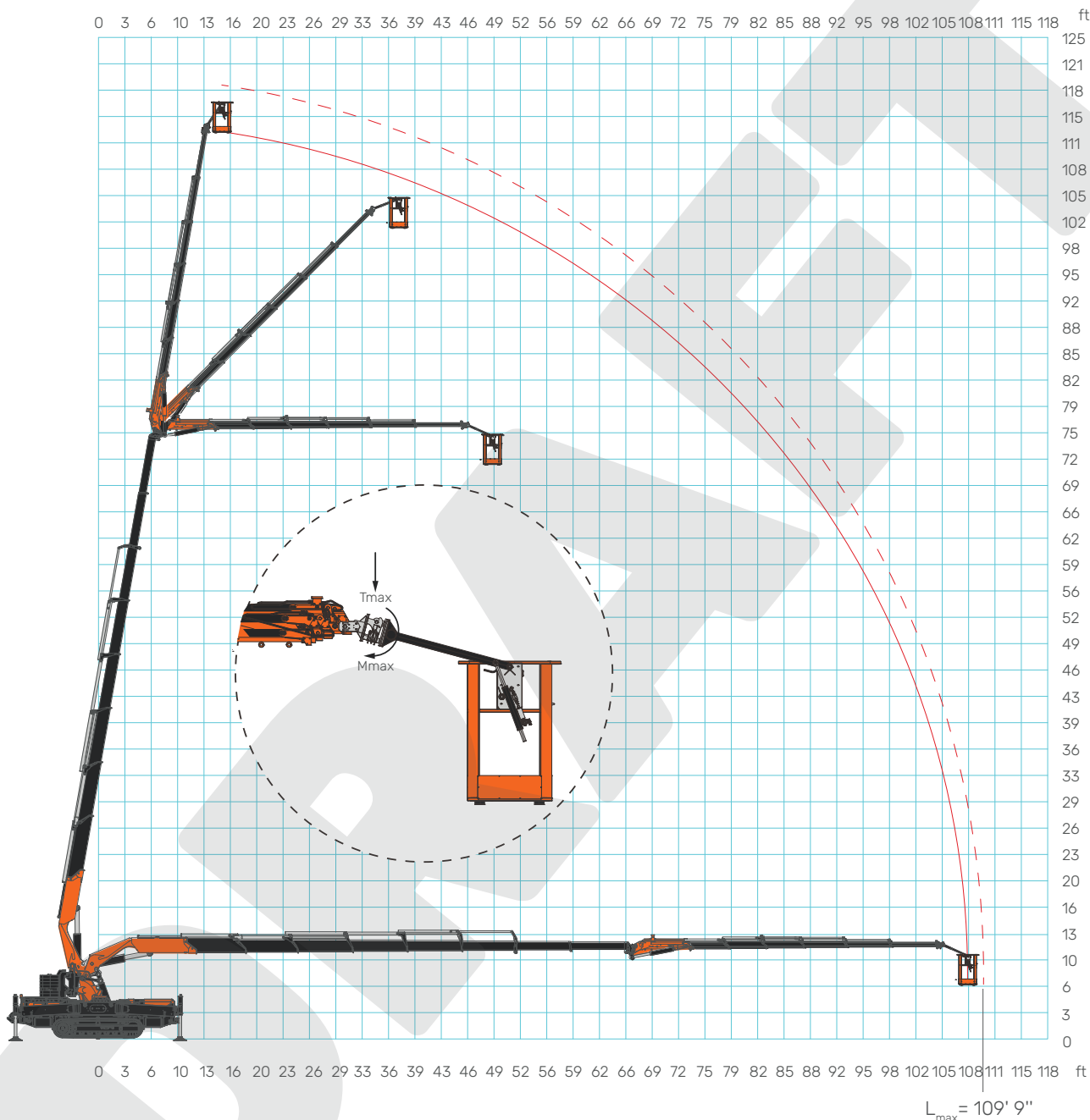
lb

265

^[1]: The crane is equipped with LMI. The maximum reachable distance may vary by about 3' 3".

^[2]: The maximum reachable distance can be reached by extending the JIB first and then extending the boom.

Two-men basket chart



PLE	MWP-2PG.JIB6500.6HA	Max Capacity	lb	440
	MWP-2PG-A.JIB6500.6HA			440

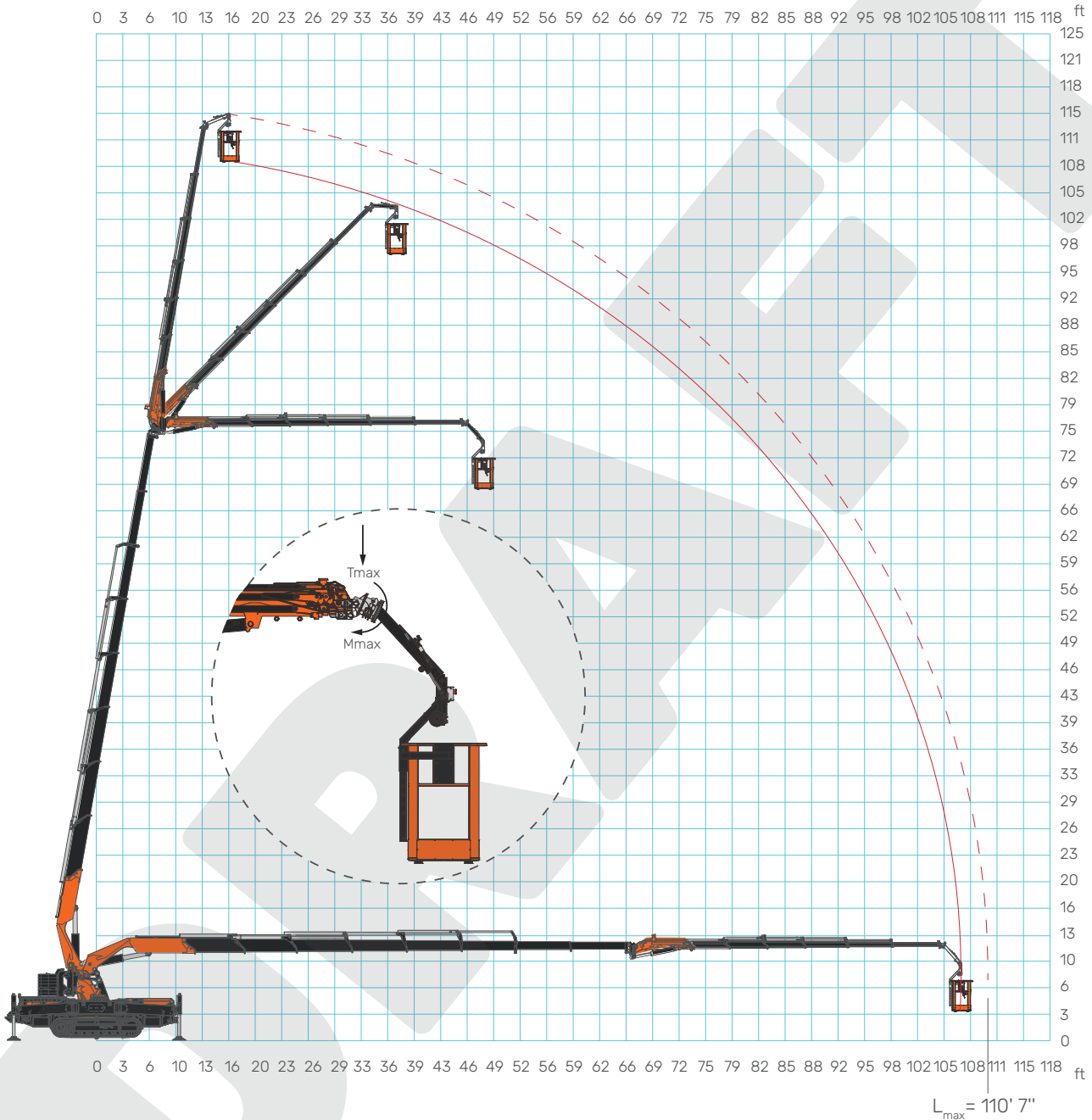
[1]: The crane is equipped with LMI. The maximum reachable distance may vary by about 3' 3".

[2]: The maximum reachable distance can be reached by extending the JIB first and then extending the boom.

JF1050 CDH

Two-men rotating basket chart

06.05.2026 | REV0.0



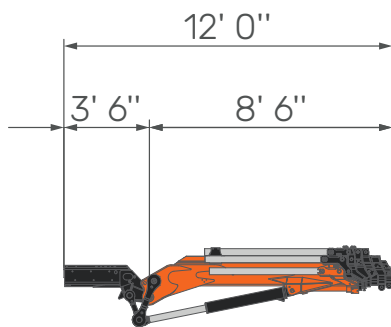
PLE		MWP-2PGR.JIB6500.6HA	Max Capacity	lb	440
		MWP-2PGR-A.JIB6500.6HA			440

[1]: The crane is equipped with LMI. The maximum reachable distance may vary by about 3' 3".

[2]: The maximum reachable distance can be reached by extending the JIB first and then extending the boom.

ACCESSORIES

JIB6500.6HA



WEIGHT		JIB	JIB6500.6HA	With activation	lb	-
				Without activation		-

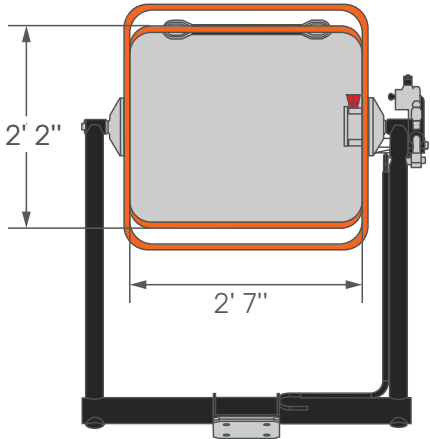
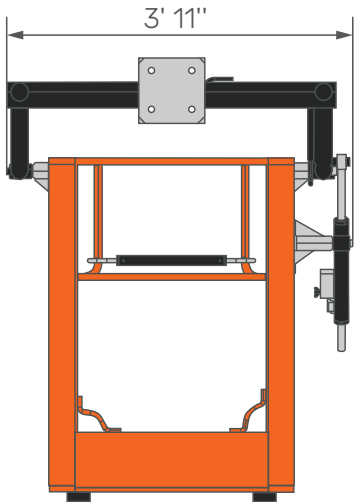
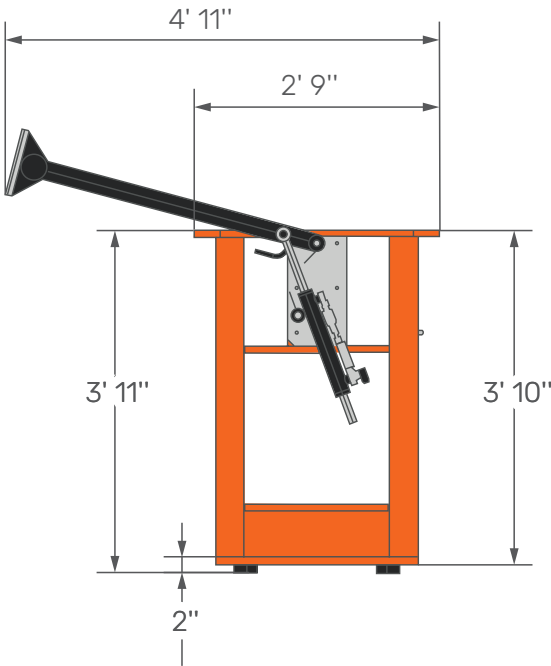
[ft]

JF1050 CDH

One-man basket features

06.05.2026 | REV0.0

MWP-1PG.JIB6500.6HA



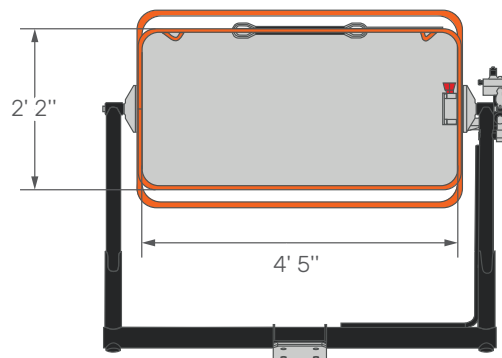
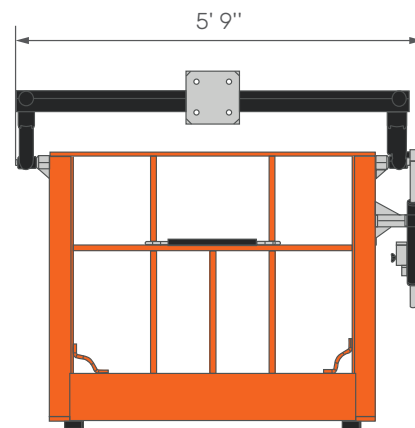
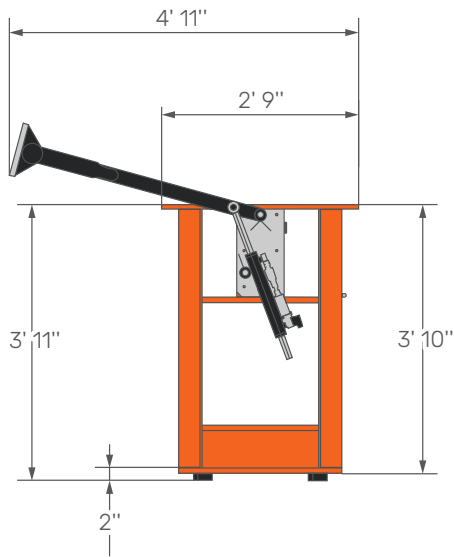
WEIGHT



PLE	MWP-1PG.JIB6500.6HA	lb	293
-----	---------------------	----	-----

MWP-2PG.JIB6500.6HA

MWP-2PG-A.JIB6500.6HA



WEIGHT



PLE	MWP-2PG.JIB6500.6HA	lb	352
	MWP-2PG-A.JIB6500.6HA		293

[ft]

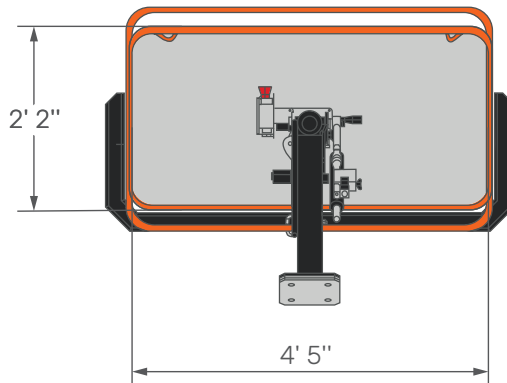
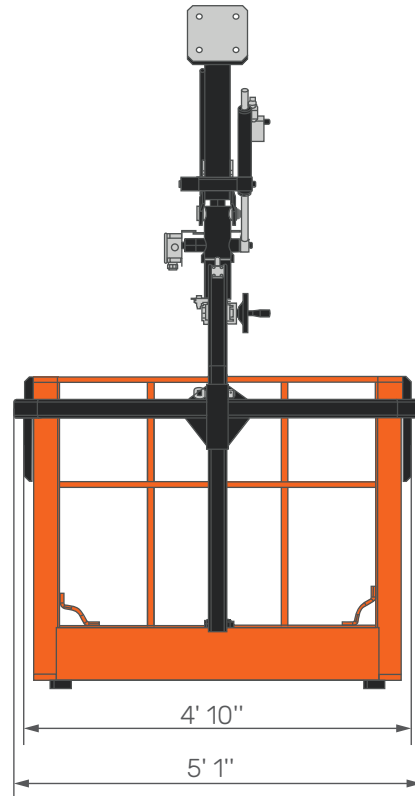
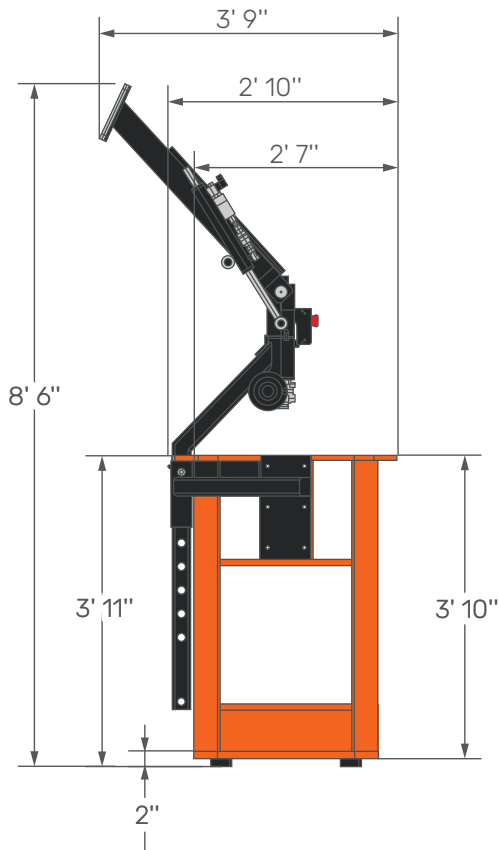
JF1050 CDH

Two-men rotating basket features

06.05.2026 | REV.0.0

MWP-2PGR.JIB6500.6HA

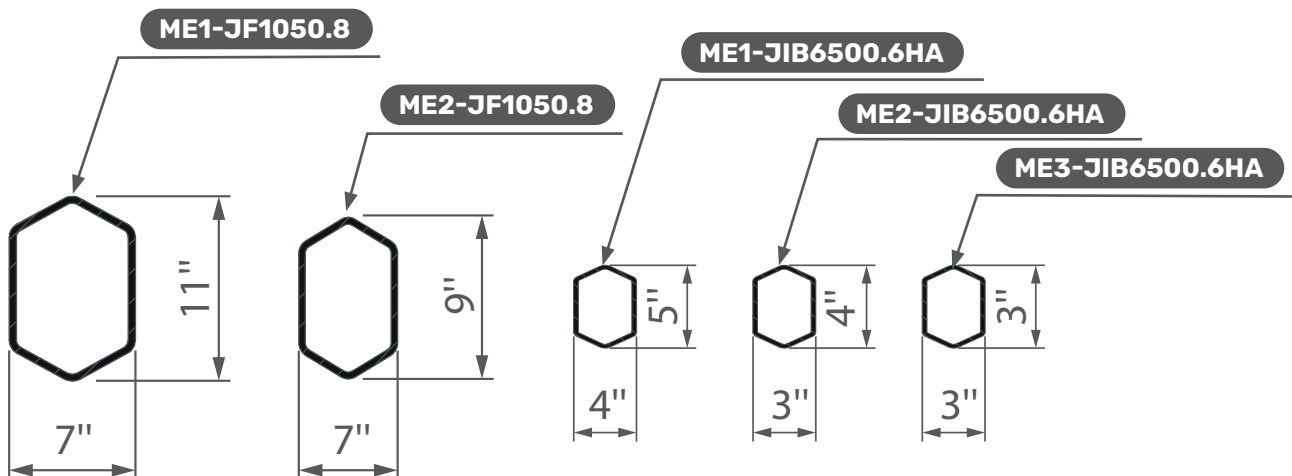
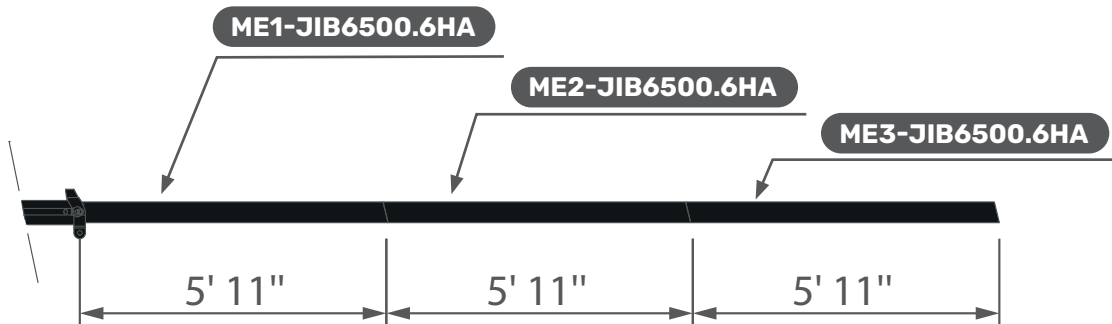
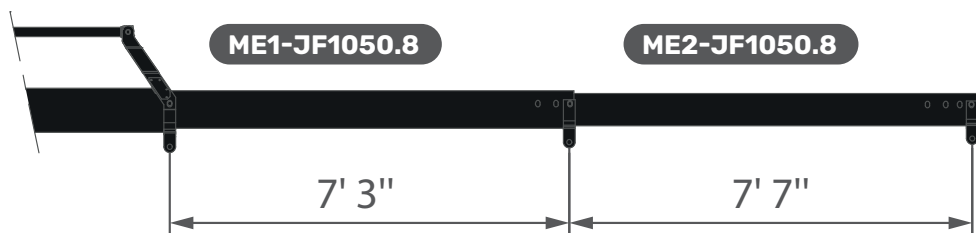
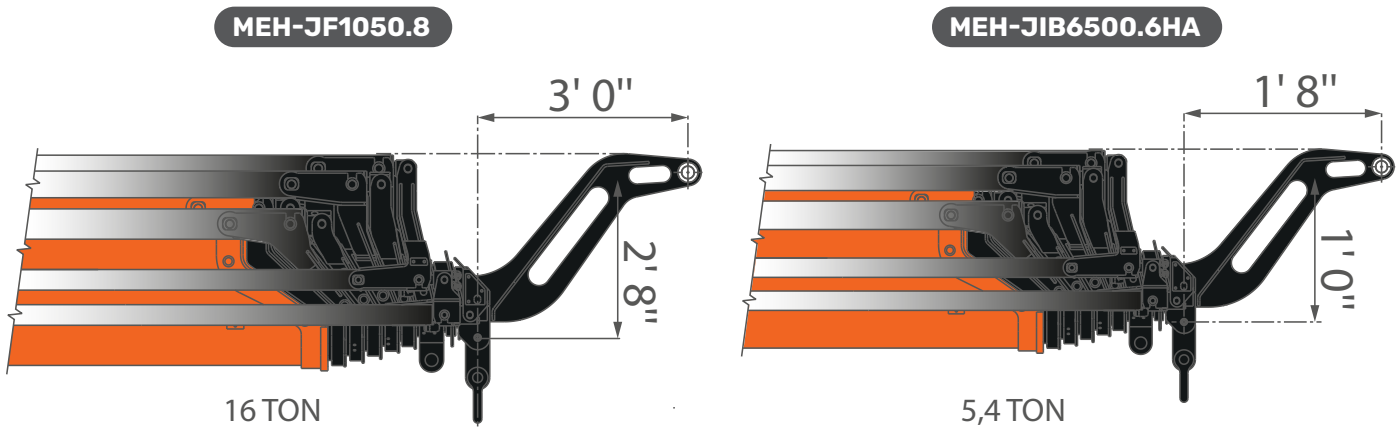
MWP-2PGR-A.JIB6500.6HA































WEIGHT



PLE	MWP-2PGR.JIB6500.6HA	lb	456
	MWP-2PGR-A.JIB6500.6HA		381



SYMBOLS

 Weight	 Outriggers Mats	 Main Boom Lifting	 Hydraulic System
 Crane	 Engine	 Boom Length	 Electric System
 Travel Speed	 Powerpack	 Jib	 Working Temperature
 Gradeability	 Maximum Capacity	 Turret Slewing	 Hydraulic Activation
 Track Load	 Maximum Outriggers Load	 Winch	 Hook
 Sound Emissions	 Maximum Wind Speed in Working Conditions	 Hookblock	 Manual Extensions
 Low Marking Pads	 PLE Activation	 PLE	 JDP Jib Dual Power

- Load limited by LMI
- Load to be limited by the operator
- Load to be verified and limited by the operator
- * Max. moment

LOAD CHARTS REMARKS

- HC1 HD4 S2 lifting class, according to EN12999:2020 standard.
- Load capacities are given in pounds.
- Hookblocks and hooks weight is part of the load, hence it shall be deducted from the capacity values.
- The working radius is measured form the turret slewing centre.
- The supplied Technical Data is part of the Use & Maintenance Manual.
- Features and specifications may change without prior advice.
- All indicated data are for informational purposes only and are not binding as the crane performs differently depending on its use.



Jekko s.r.l.

Via Galileo Galilei, 6/8 – 31010 Godega di Sant’Urbano (TV) – Italy
info@jekko.it – www.jekko-cranes.com

SERIAL NUMBER:



06.05.2026 | REV0.0